

Dec  
2018

# EDEN COURT

# CINEMA

01463 234 234 | [www.eden-court.co.uk](http://www.eden-court.co.uk)



## FANTASTIC BEASTS: THE CRIMES OF GRINDELWALD (12A)

FRI 30 NOV – THU 06 DEC



Director **David Yates** | Starring **Eddie Redmayne, Katherine Waterston, Dan Fogler, Jude Law**

UK/USA | 2018 | 134 mins

The second instalment of JK Rowling's *Fantastic Beast* series finds 'magizoologist' Newt Scamander on a new mission battling notorious dark wizard Grindelwald where things go very wrong when his magical creatures escape.



## ANNA AND THE APOCALYPSE (15)

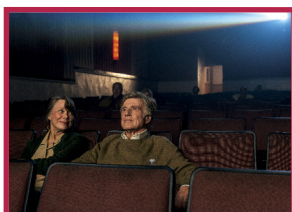
FRI 07 – THU 13 DEC



Director **John McPhail** | Starring **Ella Hunt, Malcolm Cumming, Sarah Swire, Mark Benton, Paul Kaye**

UK/USA | 2017 | 107 mins

After a hugely popular screening at the 2018 Inverness Film Festival and a nomination for Best Film at the 2018 BAFTA Scotland Awards, this hilarious Christmas-zombie-musical mashup is coming to our screens. Starring former Eden Court LAMDA student Malcolm Cumming.



## THE OLD MAN & THE GUN (12A)

FRI 21 – MON 24 & WED 26 – THU 27 DEC



Director **David Lowery** | Starring **Robert Redford, Sissy Spacek, Casey Affleck, Danny Glover, Tom Waits**

USA | 2018 | 93 mins

The true story of Forest Tucker – who by the age of 70 had a string of heists under his belt that had confounded authorities and enchanted the public.

Preceded by: **SANCTUARY**

Director **Falconer Houston** | UK | 1977 | 7 mins

Faced with yet another day teaching music to uninterested boys, a teacher at the end of his tether decides to take the rest of the day off.



## MARY POPPINS RETURNS (PG tbc)

FRI 21 – MON 24 & WED 26 – THU 03 JAN



Director **Rob Marshall** | Starring **Emily Blunt, Lin-Manuel Miranda, Colin Firth, Meryl Streep**

USA | 2018 | tbc mins

The much anticipated sequel to the 1964 classic. Jane and Michael have grown up and Mary Poppins returns to help Michael's children bringing back much needed joy and magic into their lives.

ALSO SCREENING THIS MONTH: **THE WILD PEAR TREE**, **NT LIVE: THE MADNESS OF GEORGE III**  
**AND WARREN MILLER'S FACE OF WINTER**

FOR SCREENING TIMES SEE THE TIMETABLE & FOR MORE INFO GO TO [WWW.EDEN-COURT.CO.UK](http://WWW.EDEN-COURT.CO.UK)

## THE WILD PEAR TREE

**AHLAT AGACI** (15)  
**FRI 30 NOV – THU 06 DEC**



Director **Nuri Bilge Ceylan**  
 Starring **Dogu Demirkol, Murat Cemcir**

Turkey | 2018 | 188 mins | Turkish with subtitles  
 A young aspiring writer returns to his native village, where he will have to put his dreams aside as his father's debts catch up with him.

## WIDOWS

(15)  
**SAT 01 – THU 06 DEC**



Director **Steve McQueen**  
 Starring **Viola Davis, Liam Neeson**

UK/Ireland | 2018 | 128 mins  
 When their husbands die in a heist gone wrong, four widows are forced to take things upon themselves and finish what their husbands started.

## BUDDIES

(15+)



Director **Arthur J. Bressan, Jr.**  
 Starring **Geoff Ehdolm, David Schachter**

USA | 1985 | 81 mins | In English with English subtitles  
 The first screen drama about AIDS, *Buddies* is a timeless portrayal of an entire era in gay history. Screening in celebration of World AIDS Day and presented in association with SQIFF, WAVE Highland and the Highland LGBT Forum. £6/£5

## SHOPLIFTERS

**MANBIKI KAZOKU** (15)  
**FRI 07 – THU 13 DEC**



Director **Hirokazu Kore-eda**  
 Starring **Lily Franky, Kirin Kiki, Sôsuke Ikematsu**

Japan | 2018 | 121 mins  
 Winner of Palme d'Or: 2018 Cannes Film Festival. A down and out family take in a homeless little girl and live happily until an unforeseen incident reveals hidden secrets. **Preceded by:**

## MAR A THACHAIR DO DH'FHEAR A SGUR A DHOL DHAN EAGLAIS

**THE MAN WHO STOPPED GOING TO CHURCH**  
 Director **John Murdo MacAulay**

UK | 2017 | 5 mins | Gaelic with English subtitles

## THE NUTCRACKER AND THE FOUR REALMS



(PG)

**SAT 08, SUN 09, TUE 11 – THU 13 DEC**

Directors **Lasse Hallström, Joe Johnston**  
 Starring **Mackenzie Foy, Keira Knightley**

USA | 2018 | 99 mins  
 With her family facing their first Christmas without their mother, Clara inadvertently gets on a journey in search of a key that could return harmony to an unstable world.

## FREE SOLO

(12A)  
**PREVIEW WITH Q&A – TUE 11 DEC**  
**FRI 28 – MON 31 DEC & WED 02 – THU 03 JAN**

Directors **Chai Vasarhelyi, Jimmy Chin**  
 Starring **Alex Honnold**

USA | 2018 | 100 mins  
 A stunning and unflinching portrait of free soloist climber Alex Honnold, as he prepares to climb the face of the world's most famous rock – the 3,200-foot El Capitan in Yosemite National Park... without a rope. **The screening on Tue 11 Dec will be followed by a live satellite Q&A with climber Alex Honnold and the filmmakers.**

## SUSPIRIA

(18)  
**FRI 14 – THU 20 DEC**



Director **Luca Guadagnino**  
 Starring **Dakota Johnson, Tilda Swinton**

Italy/USA | 2018 | 153 mins  
 In the highly anticipated remake of Dario Argento's masterpiece, a darkness swirls at the centre of a world-renowned dance company, one that will engulf the troupe's artistic director, an ambitious young dancer and a grieving psychotherapist.

## TEENAGE SUPERSTARS

(15)



**FRI 14, SAT 15, WED 19 & THU 20 DEC**  
 Director **Grant McPhee**  
 Starring **Eugene Kelly, Frances McKee, Alan McGee**

UK | 2017 | 107 mins  
 This new documentary from the creators of *Big Gold Dream* tells the story of what happened next in the uncompromising world of Scottish indie music. Bursting with new interviews, rare archive and untold stories.

## LIZZIE

(15)  
**FRI 14 – THU 20 DEC**



Director **Craig William Macneil**  
 Starring **Chloë Sevigny, Kristen Stewart**

USA | 2018 | 105 mins  
 Lizzie lives with her domineering father but when a young maid comes to work for the family a secret intimacy blossoms between them resulting in a wicked plan... **Preceded by:**

## SALT & SAUCE

Director **Alia Ghafar**

UK | 2017 | 11 mins

## CBEBIES CHRISTMAS SHOW: THUMBELINA

**SAT 15 DEC**

UK | 2018 | 70 mins  
 The much anticipated annual CBeebies Christmas Show is coming to the big screen for a family-friendly cinema experience!

Seat price: Adult £10, Child £8

## AN ARTIST'S EYES

(Cert tbc)

**SUN 16 DEC**

Director **Jack Bond** Starring **Chris Moon**

UK | 2018 | 77 mins  
 A lyrical journey through the work of British contemporary painter, Chris Moon. The director, Jack Bond, will be joining us for a Q&A after the screening.

## MUG

(15)

**TUN 16 – THU 20 DEC**

Director **Malgorzata Szumowska**

Starring **Mateusz Kosciukiewicz**  
 Poland | 2018 | 92 mins | Polish with subtitles  
 After an accident at the workplace leaves his face disfigured, a young man undergoes a face transplant and experiences ensuing identity issues.

## MAKE ME UP

(15)  
**MON 17 & TUE 18 DEC**

Director **Rachel Maclean**  
 Starring **Christina Gordon, Rachel Maclean**

UK | 2018 | 85 mins  
 Marking 100 years since women were first given the right to vote in the United Kingdom this horror/comedy dystopian film reflects on the shortcomings of our journey towards equality. £5

## SORRY TO BOTHER YOU

(15)  
**FRI 28 DEC – THU 03 JAN**



Director **Boots Riley**  
 Starring **Lakeith Stanfield, Tessa Thompson**

USA | 2018 | 112 mins  
 When telemarketer Cassius Green discovers he has the key to professional success, things soon evolve in an unpredictable direction.

## RALPH BREAKS THE INTERNET

(PG)

**FRI 28 DEC – THU 03 JAN**



Directors **Phil Johnston, Rich Moore**  
 Starring **John C. Reilly, Sarah Silverman**

USA | 2018 | 112 mins  
 Travelling through the virtual metropolis of the world wide web on a quest to save Vanellope's arcade game, how can Ralph and Vanellope hope to succeed in this huge, strange world? **Preceded by:**

## PEARFALL

(N/C/U)

Director **Leonid Shmelkov**

Russia/Estonia | 2017 | 3 mins | Animation

## DISOBEDIENCE

(15)

**FRI 28 – MON 31 DEC & WED 02 – THU 03 JAN**



Director **Sebastián Lelio**  
 Starring **Rachel Weisz, Rachel McAdams**

UK/Ireland/USA | 2017 | 114 mins  
 A woman returns to the community that shunned her years earlier for an attraction to a childhood friend. Once back, passions reignite as they explore the boundaries of faith and sexuality.

## THE GRINCH

(U)

**FRI 21 – THU 27 DEC**



Director **Yarrow Cheney, Scott Mosier**  
 Voices **Benedict Cumberbatch, Angela Lansbury**

China/USA | 2018 | 90 mins  
 A grumpy Grinch plots to ruin Christmas for the village of Whoville.

## CHRISTMAS CLASSICS



## IT'S A WONDERFUL LIFE

(U)  
**FRI 21 – MON 24 DEC**

Director **Frank Capra**  
 Starring **James Stewart, Donna Reed**

USA | 1946 | 129 mins  
 Frank Capra's classic Christmas tale returns for its annual outing. This sells out every year so make sure you book now.

## DIE HARD

(15)  
**FRI 21 & SAT 22 DEC**

Director **John McTiernan**  
 Starring **Bruce Willis, Alan Rickman**

USA | 1988 | 132 mins  
 The first of the *Die Hard* franchise and arguably amongst the best films of its type ever made!

## LUX SCOTLAND PRESENTS... ODDKIN (Cert tbc)

SUN 02 DEC



This programme, selected by Scottish Sculpture Workshop (SSW), takes its lead from Donna Haraway's refusal to distinguish between humans, animals and machines, instead proposing new ways of understanding our world in a way that challenges normative structures and boundaries.

£5/£4

## GREAME STEPHEN'S THE PENALTY (N/C 12+)

FRI 07 DEC

Director **Wallace Worsley**

Starring **Lon Chaney, Doris Pawn, Charles Clary**

USA | 1920 | 90 mins

Come and enjoy a screening of this striking film with live performance of leading Scottish composer Graeme Stephen's brand new score (on guitar) and cellist Pete Harvey.

## HIMRA PRESENTS STORIES OF MOVEMENT (Cert tbc)

TUE 18 DEC



75 mins plus post film discussion

The Highland Migrant and Refugee Advocacy (HIMRA) has a focus on empowering migrants and refugees to speak out and seek support. *Home and Eight Borders, Eight Days* will be screened prior to a discussion aimed at raising awareness about migrant and refugee issues and discuss ways to facilitate inclusive communities in Highland.

£3

## NEW YEAR WITH BILLY WILDER



## SOME LIKE IT HOT (U)

SUN 23 & WED 26 DEC

Director **Billy Wilder**

Starring **Marilyn Monroe, Tony Curtis**

USA | 1959 | 121 mins

After witnessing a Mafia murder, Joe and his buddy Jerry plan to escape from Chicago disguising themselves as women but things heat up and the mobsters close in.

## THE APARTMENT (PG)

FRI 28, SUN 30 & MON 31 DEC

Director **Billy Wilder**

Starring **Jack Lemmon, Shirley MacLaine**

USA | 1960 | 125 mins

Baxter is disappointed to learn his boss's mistress is Fran Kubelik, the elevator girl at work – soon he must decide between the girl he loves and his career.

## COMEDY GENIUS

With the support of the Independent Cinema Office and BFI, awarding funds from The National Lottery.

### 9 TO 5 (15)

SAT 08 – WED 12 DEC



Director **Colin Higgins**

Starring **Jane Fonda, Dolly Parton**

USA | 1980 | 109 mins

This re-release of the 1980's blockbuster offers a great opportunity to revisit, or discover for the first time, a classic feminist comedy that was decades ahead of its time.

## THE MARVELLOUS MABLE NORMAND: THE LEADING LADY OF FILM COMEDY (U)

SUN 16 & MON 17 DEC

Director **Various**

Starring **Mabel Normand, Charlie Chaplin**

USA | 1913 – 1927 | 78 mins

Everyone knows Charlie Chaplin and Buster Keaton, but where are the women in silent film comedy? Mabel Normand, who starred in 167 shorts and 23 features, finally gets her moment in the spotlight.

## COMING TO AMERICA (15)

SUN 23, WED 26 & THU 27 DEC

Director **John Landis**

Starring **Eddie Murphy, James Earl Jones**

USA | 1988 | 117 mins

This cult comedy favourite featured a career changing role for comedian and action star Eddie Murphy and was the first romantic comedy for the undisputed box office king of the 1980s.

## TAMPO (18)

SAT 29 & SUN 30 DEC

Director **Juzo Itami**

Starring **Tsutomo Yamazaki, Nobuko Miyamoto**

Japan | 1986 | 114 mins | Japanese with subtitles

How far would you go for the perfect ramen? *Tampopo* is a brilliant underdog story of a roadside ramen shop vying to create the best ramen around.



## SCOTTISH ANIMATION

### STORIES BROUGHT TO LIFE (Cert tbc)

SUN 16 DEC



2018 | 78 mins

Stretching back over 40 years, this programme showcases early narrative works by the likes of Donald Holwell, Neil Jack, Lizzy Hobbs and BAFTA winners Ainslie Henderson and Will Anderson.

### ABSTRACTION & EXPERIMENTATION (Cert tbc)

SUN 30 DEC

2018 | 72 mins

This programme showcases Scottish animation from the past 40 years that play with the form and structure of filmmaking.

Selected by animator Ross Hogg as part of **Anim18: A Celebration of British Animation.**

## LIVE BROADCAST

See the best of British theatre, opera and ballet as it happens, as the national companies live screen their productions to cinemas across the world via satellite.

### NT LIVE: ANTONY & CLEOPATRA (Cert tbc)

THU 06 DEC LIVE

SAT 22 & THU 27 DEC ENCORES



Director **Simon Godwin**

Cast **Ralph Fiennes, Sophie Okonedo**

UK | 2018 | 220 mins approx

Broadcast live from the National Theatre, Ralph Fiennes and Sophie Okonedo play Shakespeare's famous fated couple in his great tragedy of politics, passion and power.

Live £17.50/£15 Encore £16/£14.50

### THE ROYAL BALLET: THE NUTCRACKER (Cert tbc)

MON 03 DEC LIVE

SUN 09 DEC ENCORES



Choreography **Peter Wright**

Music **Pyotr Il'yich Tchaikovsky**

UK | 2018 | 150 mins approx (incl. 1 interval)

Peter Wright's production of this much loved classic keeps true to the spirit of this Russian ballet classic, with period details and dancing snowflakes.

£17.50/£15 Under 16s £10

### THE METROPOLITAN OPERA: LA TRAVIATA (Cert tbc)

SUN 15 DEC LIVE



Director **Michael Mayer** | Conductor **Yannick Nézet-Séguin**

Cast **Diana Damrau, Juan Diego Flórez**

UK | 2018 | 200 mins (incl. 2 intermissions)

Sung in Italian with English surtitles

Verdi's timeless tragedy of love, betrayal, heartbreak and revenge – this new production features a stunning eighteenth century set that changes with the seasons. £20/£18

### THE KING AND I (Cert tbc)

SUN 16 & THU 20 DEC

Director **Bartlett Sher** Cast **Kelli O'Hara, Ken Watanabe**

UK | 2018 | 180 mins approx

1860s Bangkok. A tempestuous relationship develops between the King of Siam and Anna, a British schoolteacher who has come to Siam to teach his many wives and children. £16/£14.50

### MYSTERY MOVIE (18+)

WED 12 DEC

Take a leap of faith with us and see something you won't regret you never saw. As the Mystery Movie could be anything it is only open to those over 18. £6/£5

### INVERNESS FILM FANS

Invernessfilmfans.org

### DAY OF WRATH (PG)

TUE 11 DEC

Director **Carl Theodor Dreyer** | USA | 1943 | 93 mins

# DEC 2018

<b>Sat 01</b>	Fantastic Beasts: The Crimes Of Grindelwald	11.00 14.00 17.30/20.00
Widows		11.15/20.15
The Wild Pear Tree		13.00/19.00
Buddies		18.15
<b>Sun 02</b>	Widows	11.15 13.45/17.15/20.00
Fantastic Beasts: The Crimes Of Grindelwald		11.30/14.00 17.00/19.30
The Wild Pear Tree		13.00/19.15
LUX Scotland Presents...		17.30
<b>Mon 03</b>	Widows	11.00/17.30 13.45/19.00
Fantastic Beasts: The Crimes Of Grindelwald		11.30/14.00 17.00/19.30
The Royal Ballet: The Nutcracker Live		19.15
The Wild Pear Tree		20.00
<b>Tue 04</b>	Fantastic Beasts: The Crimes Of Grindelwald	11.00/19.15
The Wild Pear Tree		11.15/18.45
Widows		14.00/19.30
<b>Wed 05</b>	Widows	11.00/20.30
Fantastic Beasts: The Crimes Of Grindelwald		11.15/14.00 17.30/20.15
The Wild Pear Tree		13.45/17.00
NT Live: The Madness of George III <b>Encore</b>		19.15
<b>Thu 06</b>	Fantastic Beasts: The Crimes Of Grindelwald	11.00/13.45/17.30
Widows		11.15/14.00
NT Live: Antony & Cleopatra <b>Live</b>		19.30
The Wild Pear Tree		20.00
<b>Fri 07</b>	Shoplifters	18.00
Graeme Stephen's The Penalty		19.30
Anna and the Apocalypse		20.30
<b>Sat 08</b>	Anna and the Apocalypse	10.45/18.15/20.30
The Nutcracker and the Four Realms		11.00 14.00
NT Live: The Madness of George III <b>Encore</b>		13.15
9 to 5		18.00
Shoplifters		20.15

<b>Sun 09</b>	Shoplifters	11.15/19.45
The Nutcracker and the Four Realms		11.30/14.15
The Royal Ballet: The Nutcracker		14.00
9 to 5		17.15
Anna and the Apocalypse		17.30/20.00
<b>Mon 10</b>	Shoplifters	18.00
Anna and the Apocalypse		18.15/20.30
<b>Tue 11</b>	Shoplifters	11.00
9 to 5		11.15
Anna and the Apocalypse		14.00/20.45
The Nutcracker and the Four Realms		17.00
Free Solo with Q&A		18.15
Day of Wrath		19.15
<b>Wed 12</b>	9 to 5	11.00
Anna and the Apocalypse		11.15/17.30
The Nutcracker and the Four Realms		14.00
Shoplifters		17.45
Warren Miller's Face of Winter		20.00
Mystery Movie		20.15
<b>Thu 13</b>	Anna and the Apocalypse	11.00/18.15/20.30
Shoplifters		14.00/20.15
The Nutcracker and the Four Realms		18.00
<b>Fri 14</b>	Lizzie	18.00
Suspiria		19.15
Teenage Superstars		20.15
<b>Sat 15</b>	Teenage Superstars	11.15
OBeebies Christmas Show: Thumbelina		14.30
Suspiria		17.30
The Metropolitan Opera: La Traviata <b>Live</b>		17.55
Lizzie		20.30
<b>Sun 16</b>	The King and I	13.15
Lizzie		13.30/20.00
Scottish Animation: Stories Brought to Life		16.00
Suspiria		17.00
The Marvellous Mabel Normand		17.45
Mug		19.15
An Artist's Eyes		19.30

<b>Mon 17</b>	Lizzie	18.00
Make Me Up		18.15
Mug		19.15
The Marvellous Mabel Normand		20.00
Suspiria		20.15
<b>Tue 18</b>	Lizzie	11.00/18.00
Mug		11.15
Suspiria		13.30/19.15
HiMRA presents Stories of Movement		18.30
Make Me Up		20.15
<b>Wed 19</b>	Suspiria	11.00/19.15
Mug		14.00
Lizzie		19.30
Teenage Superstars		19.45
<b>Thu 20</b>	Suspiria	11.00
Lizzie		14.00/18.00
The King and I		19.15
Mug		19.30
Teenage Superstars		20.15
<b>Fri 21</b>	It's A Wonderful Life	13.45/17.45
Mary Poppins Returns		14.00/17.15/20.00
The Grinch		14.15
The Old Man & the Gun		18.00/20.15
Die Hard		20.30
<b>Sat 22</b>	It's A Wonderful Life	10.45/17.45
Mary Poppins Returns		11.00/13.45 17.15/20.00
The Grinch		11.15
NT Live: Antony & Cleopatra <b>Encore</b>		13.15
The Old Man & the Gun		14.00/18.00/20.15
Die Hard		20.30
<b>Sun 23</b>	Mary Poppins Returns	11.15/13.45 17.15/19.45
It's A Wonderful Life		11.30/14.15
The Grinch		11.45
The Old Man & the Gun		14.00/17.30/19.30
Some Like It Hot		17.45
Coming To America		20.15
<b>Mon 24</b>	Mary Poppins Returns	11.00/13.45/17.15 11.15/14.00/17.30
It's A Wonderful Life		11.30/17.45
The Old Man & the Gun		11.45
The Grinch		14.15

<b>Tue 25</b>	<b>Closed: Merry Christmas</b>	
<b>Wed 26</b>	Mary Poppins Returns	11.00/14.00 17.30/20.00
The Old Man & the Gun		12.00/14.30/19.15
The Grinch		11.45
Some Like It Hot		13.45/17.15
Coming To America		19.45
<b>Thu 27</b>	Mary Poppins Returns	11.00/13.45 17.30/20.00
The Old Man & the Gun		11.15/14.00 17.15/19.45
The Grinch		11.30
Coming To America		13.30
NT Live: Anthony & Cleopatra <b>Encore</b>		18.45
<b>Fri 28</b>	Mary Poppins Returns	11.00/13.45 17.15/20.00
Ralph Breaks the Internet		11.15/14.00
The Apartment		18.00
Free Solo		18.15
Disobedience		20.15
Sorry To Bother You		20.30
<b>Sat 29</b>	Mary Poppins Returns	11.00
Ralph Breaks the Internet		11.15/14.00
Free Solo		13.30/20.30
Disobedience		17.45
Sorry To Bother You		18.00
Tampopo		20.15
<b>Sun 30</b>	Mary Poppins Returns	11.15/13.45 17.15/20.00
Ralph Breaks the Internet		11.30
The Apartment		11.45
Scottish Animation: Abstraction & Experimentation		14.15
Tampopo		17.00
Free Solo		17.30
Disobedience		19.30
Sorry To Bother You		20.15
<b>Mon 31</b>	Mary Poppins Returns	11.00
Ralph Breaks the Internet		11.15/14.00
Free Solo		11.30
Disobedience		13.30
The Apartment		17.15
Sorry To Bother You		17.45

## TICKET PRICES

Adult (over 18s) before 17.00	£7.50
Adult Evening	£10.00
Adult Reduced Rates Evening	£9.00
U18s & Students	£6.00 at all times
Movie Mondays	£7.00
Eden Court Friends	£1.50 off

Buy for any three films in a month at one time and get **£1.00 off each ticket.**

## EXCLUSIVE SCREENINGS FOR EDEN COURT FRIENDS

**Friends Coffee Morning – MON 24 DEC, The Old Man & the Gun (12A)**  
Film starts 11.30am – Coffee served from 10.30am ☺

**DREAM AND SCREAM** Specially for parents and carers of new babies aged 0–12 months. Look out for ☺ on individual screenings.

When a film is marked **AD** this means that **AUDIO DESCRIPTION** is available via a headset for all screenings (please ask Box Office for your headset). When a film is marked **S** this means there will be selected **SUBTITLED** screening/s.

When a film is marked **AF** this means that there will be an **AUTISM-FRIENDLY SCREENING** of this film. These screenings are especially for people on the autistic spectrum and their families, friends and carers.

When a film is marked **60+** this means it's a **SILVER LININGS SCREENING** for Over 60s. Tickets cost just **£5.00**



SUPPORTED BY

